

CVI CME/CEU/SDMS/VOICE Programs

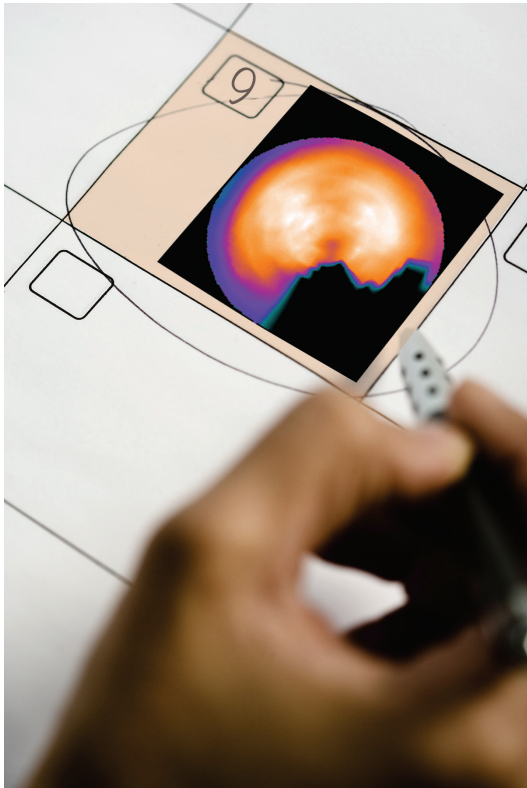
***NEW DATE!* 5/2/19**

NEW DATE

THU

5•2•19

PLEASE NOTE THE DATE CHANGE TO THURSDAY, MAY 2ND 2019



CVI's 15th Annual Update in Nuclear Cardiology CME Program

Thursday, May 2, 2019

Hilton Philadelphia Penn's Landing

Philadelphia's Only Full-Day Nuclear
Cardiology Program for Physicians,
Technologists & Allied Healthcare
Professionals

Course Directors:

Veronica Covalesky, MD

Christopher Hansen, MD

Associate Director:

Pravin Patil, MD



Pennsylvania
CHAPTER



For more information visit us on the web at www.cviphiladelphia.org